

# Eagle Mountain Lake Watershed Conservation Initiative

---

*A partnership between*  
Wise Soil and Water Conservation District,  
Wise County Water Control and Improvement District #1,  
Wise County Commissioners Court,  
Tarrant Regional Water District and  
USDA-Natural Resources Conservation Service

## Purpose

The coordination of partners to provide technical assistance to agricultural producers to plan and implement conservation treatment to reduce the high levels of nutrients and sediment loadings into Eagle Mountain Lake

# Goals

---

- To develop 150 conservation plans in Wise County within the Eagle Mountain Watershed
- Focus the bulk of the outreach to land-owners in the Walnut, Blue and Salt Creek sub-watersheds



- Financially assist landowners with conservation plan and practice implementation through the Environmental Quality Incentives Program(EQIP)
- Reduce the amount of sediment and nutrients deposited in Eagle Mountain Lake

[Watershed Map](#)



From this...



To this...

## Partner Roles

---





**Wise Soil and Water  
Conservation District:**

- Serve as project manager and administrator
- Employ five part-time District Technicians to perform technical assistance in conservation planning, application, administrative and rural community outreach during the 15 month period



**USDA – Natural Resources  
Conservation Service:**

- Provide fifty percent of the cost of the project not to exceed \$200,000
- Provide technical guidance to District Technicians and availability to NRCS technology and technical tools

These partnering organizations have agreed to provide financial support through matching and in-kind services to secure NRCS funding for technical assistance:

**Tarrant Regional Water District**

**Wise County Commissioners Court**

**Wise County Water Control and Improvement  
District No. 1**

[Sub-Watershed Map](#)

# District Technicians

---



Phillip Askey

District  
Technician-  
Outreach

Mikel Thomas

District  
Technician



Lewis  
McCuistian

District  
Technician





Tyler Garrison

District  
Technician



Jerry Payne

District  
Technician

Garry Bible

District  
Technician -  
Administrative



## Outreach Status

---



- Designed a Brochure to highlight the project
- Direct mailing sent to 430 landowners within the Walnut Creek, Blue Creek, Salt Creek, Garrett Creek and Martin Branch sub-watersheds
- Distributed brochures to ag related businesses in watershed
- 12 direct on-farm outreach visits

- 12 direct phone outreach calls
- Currently identifying landowners in the 3 priority sub-watersheds
- 25 contacts have requested conservation planning assistance

**Understanding the planning process:**

STEP 1: Identify Opportunities & Problems

STEP 2: Determine Objectives

STEP 3: Inventory Resources

STEP 4: Analyze Resource Data

STEP 5: Formulate Alternatives

STEP 6: Evaluate Alternatives

STEP 7: Make Decisions

STEP 8: Implement Plan

STEP 9: Evaluate Plan

*Your land is your biggest investment and your most valuable asset.*

**Plan for the future.  
Call us today.  
(940) 627-2942**

Good land stewardship not only conserves your natural resources, it also provides multiple offsite benefits to local communities, including improved flood control, clean water, recreational opportunities, and better air quality. The Wise Soil and Water Conservation District (SWCD), the USDA-Natural Resources Conservation Service (NRCS), the Wise County Water Control and Improvement District No. 1, Tarrant Regional Water District and the Wise County Commissioners recognize those efforts and have established a partnership in North Texas to encourage more landowners to adopt land management practices. This partnership has made a special team of Conservation Technicians available to landowners in Wise County, at no cost to you. To receive technical assistance from one of these experienced planners, contact the Wise Soil and Water Conservation District.



Wise Soil and Water Conservation District No. 548  
1604 West Business 300, Suite 200  
Decatur, Texas 76234  
(940)627-2942  
wisewcd@tx.nacdnr.org  
http://www.tsswcb.texas.gov/en/swcds/548




**Wise County Water Control and Improvement District No. 1**  
**Wise County Commissioners Court**

The USDA is an equal opportunity provider and employer.

**Your Land.  
Your Plan.**




**Have you ever looked across your property and thought about some goals you would like to accomplish on it?**

**Maybe we can help.**

No one knows more about your land than you do. No one knows more about conservation than we do. Together, we can develop a plan tailored to your land and your goals to help you increase the productivity and protect the value of your land.


For over 70 years, landowners across Texas have been voluntarily seeking the technical expertise of NRCS & SWCD conservationists to preserve the value and beauty of their land.



*By working together, we can help you produce a conservation plan that meets your goals and helps protect the value of your land.*

**What is a conservation plan?**

A conservation plan is a written record of your management decisions and the conservation practices and systems you plan to use and maintain on your land. Carrying out your plan will achieve the goals of protecting the environment on and off your farm. After soil, water, air, plant, and animal resources on your property are inventoried and evaluated, the conservation technician will review several alternatives for you to consider. The alternatives you select are recorded in the conservation plan, which becomes your roadmap for better management of your natural resources.



*Your conservation plan may include practices that prevent erosion, such as this flood protection pond with grass waterways.*


**A conservation plan includes:**

- An aerial photo or diagram of your farm or ranch.
- A soils map and soils description of your property.
- Information on grass types and growth potential.
- Resource inventory data which can include forage or crop production potential, or potential livestock carrying capacity.
- A list of your treatment decisions.
- The location and schedule for applying conservation practices you want to install on your land.
- A plan of operation and maintenance of conservation systems or practices.
- Management practices that will help you maintain your land in optimum shape.

**Whether your land management plans include more recreational opportunities, lowering production costs, or increasing crop yields, we can custom design a conservation plan to help you meet those goals. We can help you develop wildlife habitat, construct a livestock water facility, create a grazing plan, manage brush, design a pond or other enhancement projects.**

**Benefits of a conservation plan:**

- Identifies problems or potential problems overlooked on a day-to-day basis.
- Protects soil along with the land's productivity.




*Wise County has some of the most erodible soils in the entire state.*

- Helps comply with environmental regulations.
- Qualifies you for financial assistance for various USDA programs that can help you implement your conservation plan.
- Flexible to your changing farm or ranch operational goals.
- Sets up a reasonable schedule for applying needed conservation practices that fits your timetable.
- Provides for on-site Technical Assistance.

**Management makes a difference:**

- Every piece of property has its own unique resource opportunities and concerns. Examples of human activities causing resource problems or concerns to the land's natural resources include:
  - SOIL being washed into streams.
  - WATER quality and sedimentation pertaining to surface water run-off issues.
- ANIMAL numbers not being managed properly.
- PLANTS being over-grazed, invasive brush species, or declining wildlife habitats.



*Properly managed land can protect natural resources while still accomplishing the landowner's goals.*

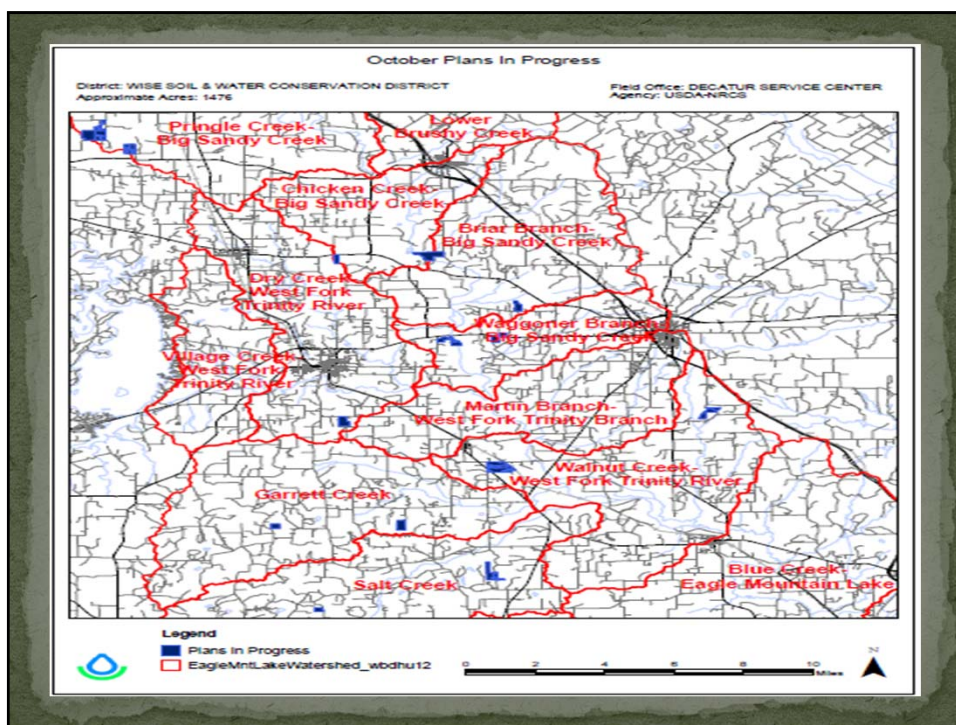
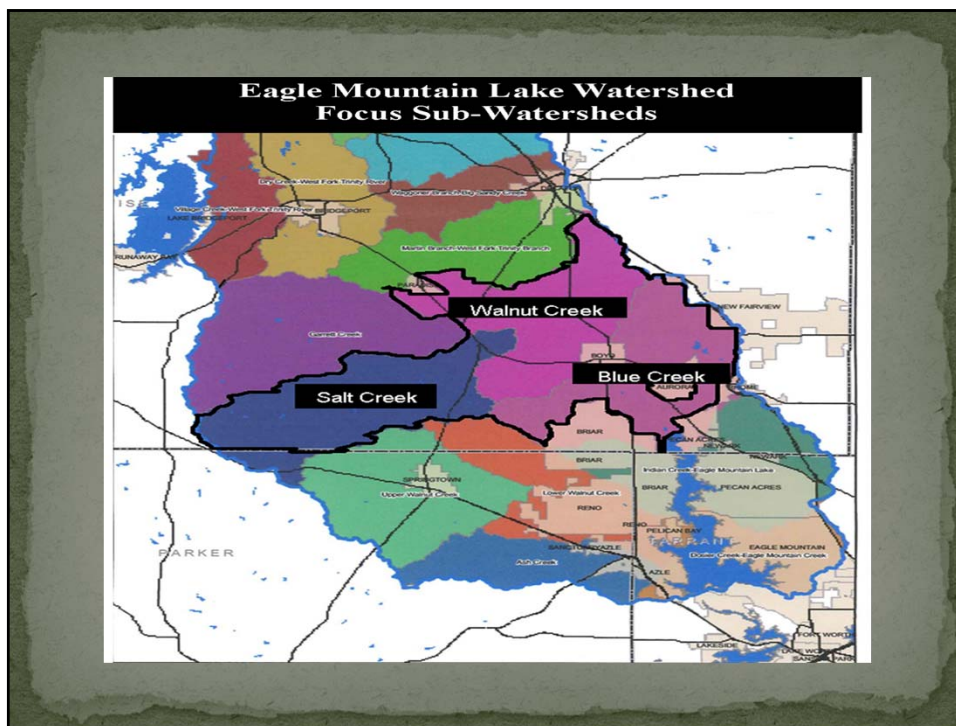
## Conservation Planning Status

---

- Fourteen conservation plans in progress
- Approximately 1,476 Acres planned within 8 Sub-Watersheds

[Conservation Planning Map](#)





Wise Soil and Water Conservation District

1604 West Business 380

Suite 200

Decatur, Texas 76234

(940) 627-2268 x 5

[Phillip.Askey@tx.nacdnet.net](mailto:Phillip.Askey@tx.nacdnet.net)