

North Central Texas Water Quality Project

Review of Cedar Creek Reservoir and Watershed

Mark Ernst
Tarrant Regional Water District

North Central Texas Water Quality Project

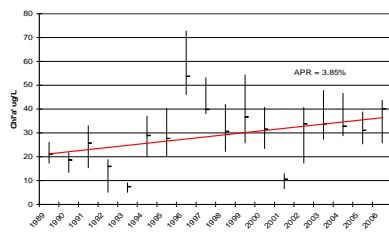
Cedar Creek Reservoir

- Watershed size – 1,007 square-miles
- Surface area - 34,000-acres
- Conservation Storage - 678,000 ac/ft
- Mean Depth – 20 ft
- Maximum Depth – 55 ft
- Shoreline – 320 miles



North Central Texas Water Quality Project

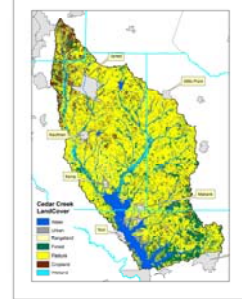
18-Year Trend (Chl'a') in Cedar Creek



North Central Texas Water Quality Project

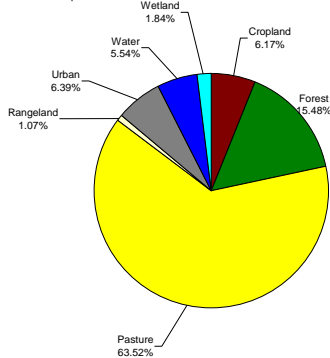
Cedar Creek Watershed

- Landuse



Total Area: 2612.052 Sq. KM

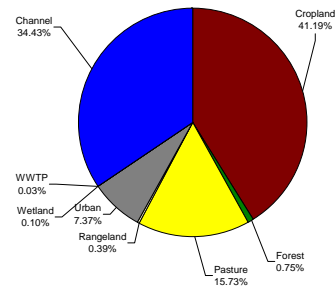
LandUse



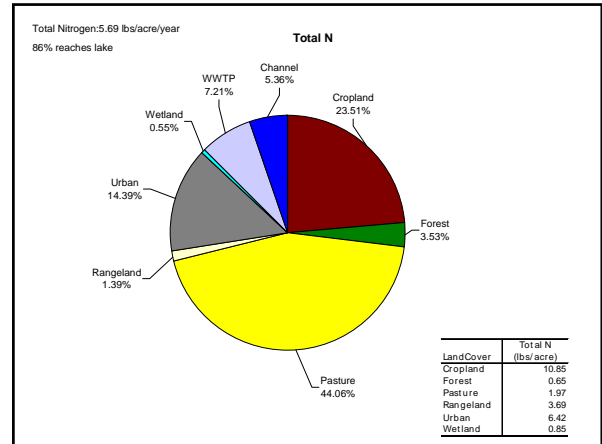
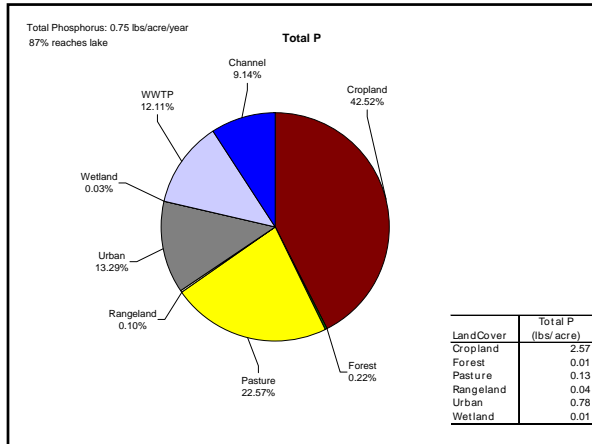
Total sediment load: 0.8 tons/acre/year

Sediment Load

97% reaches lake



LandCover	Sediment (Tonns/acre)
Cropland	5.35
Forest	0.04
Pasture	0.20
Rangeland	0.29
Urban	0.93
Wetland	0.05



North Central Texas Water Quality Project

Field Survey Channel Erosion Category

- 30 to 35% of total sediment from channel erosion

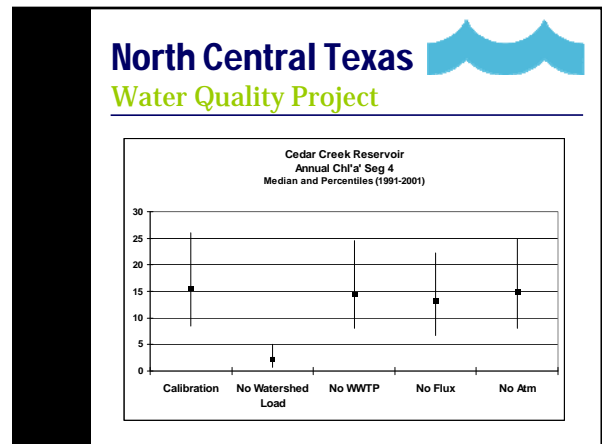
North Central Texas Water Quality Project

Cedar Creek Watershed

- Point Source Discharges
 - Terrell
 - Willis Point
 - Kaufman
 - Kemp
 - Mabank
 - Eustace
 - Athens
 - East Cedar Creek
 - Cherokee Shores

North Central Texas Water Quality Project

Cedar Creek WASP Model Nutrient Budget – TP (1991-2001)



North Central Texas

Water Quality Project

Chl'a' Segment 4: Reduction in SWAT *NPS
File Loading – Median and Percentiles (91-01)

