

**North Central Texas**



**Water Quality Project**

---

**Reservoir Modeling:  
WASP**

Mark Ernst

Water Quality Manager

Tarrant Regional Water District

# North Central Texas

## Water Quality Project

---



### WASP Model

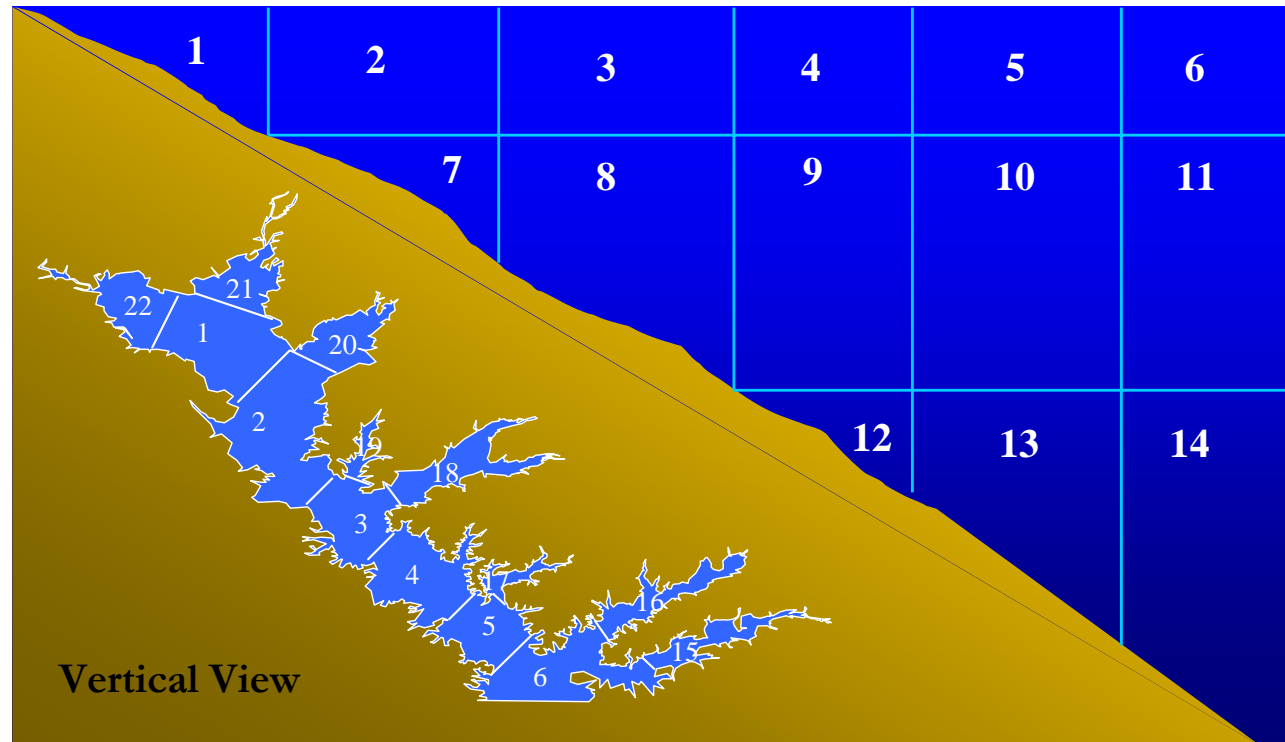
- An EPA developed and supported model
- The WASP Model has been used to provide a quantitative understanding of the nutrient balance for our reservoirs and to assess reservoir responses to external and internal nutrient load reductions.

# North Central Texas

## Water Quality Project



### Cedar Creek Reservoir Model Representation using WASP

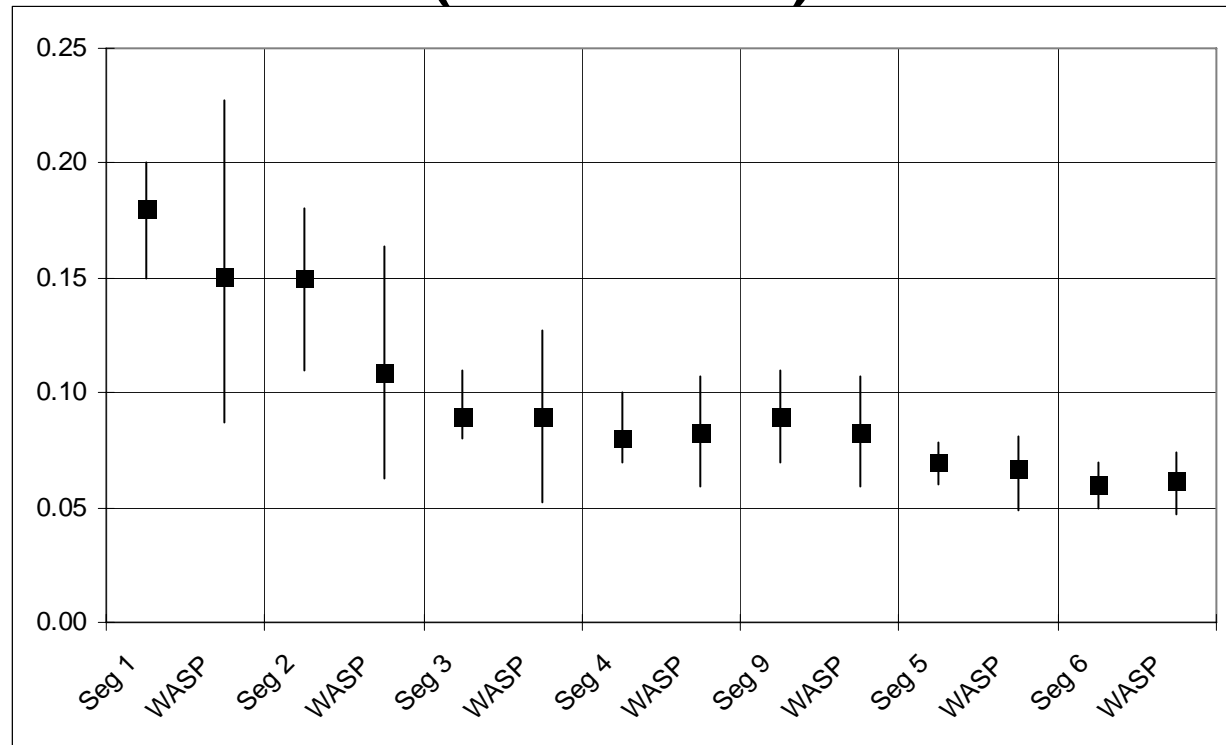


# North Central Texas

## Water Quality Project



### Cedar Creek WASP Modeling Results TP (1991-2001)

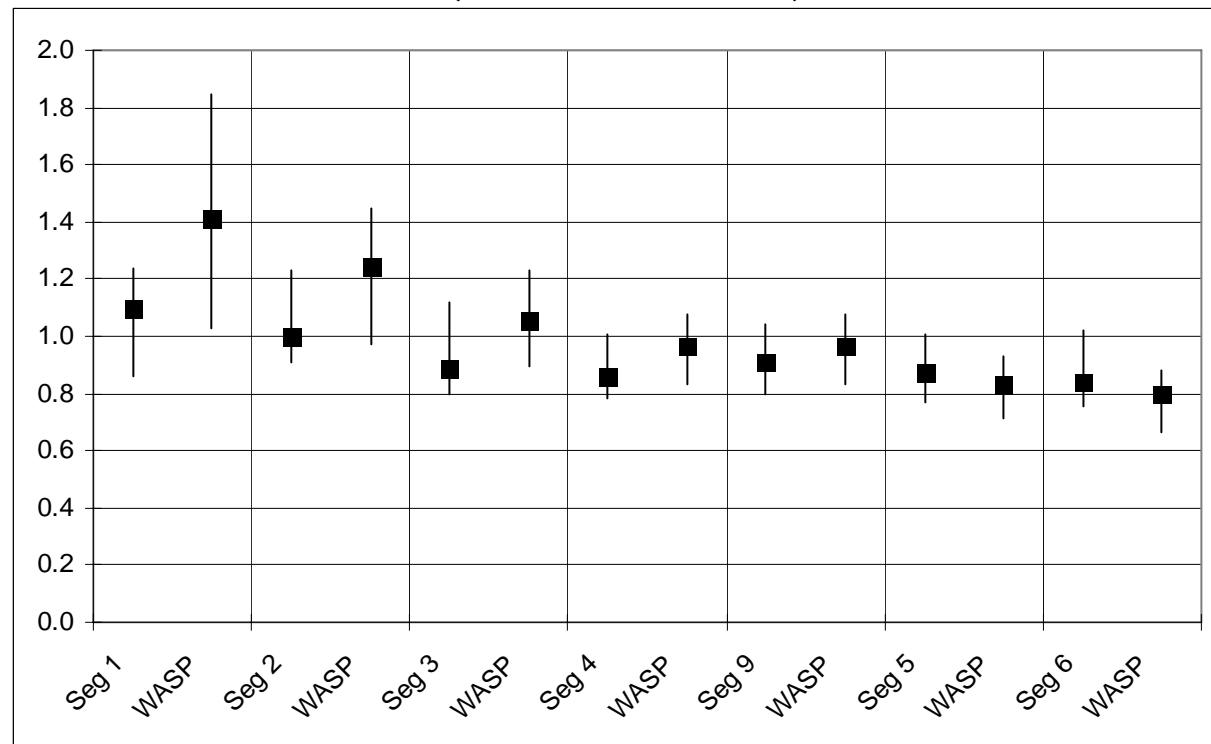


# North Central Texas

## Water Quality Project



### Cedar Creek WASP Modeling Results TN (1991-2001)

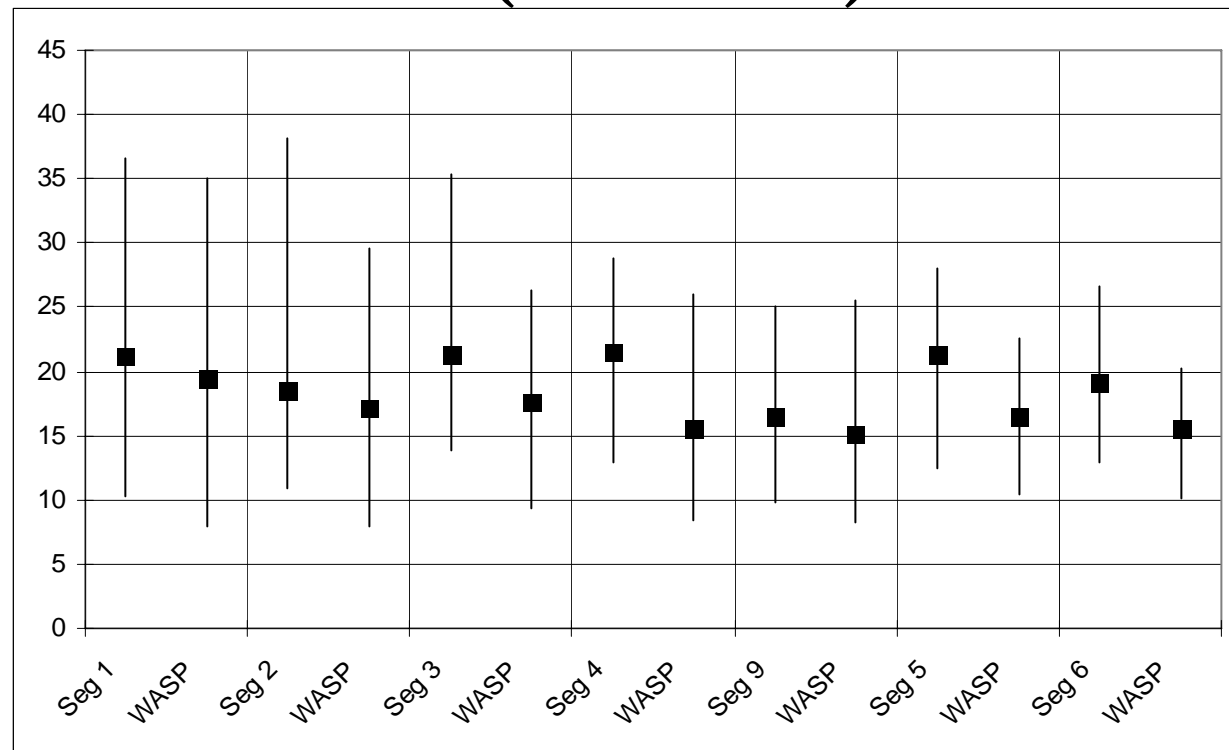


# North Central Texas

## Water Quality Project



### Cedar Creek WASP Modeling Results Chl'a' (1991-2001)

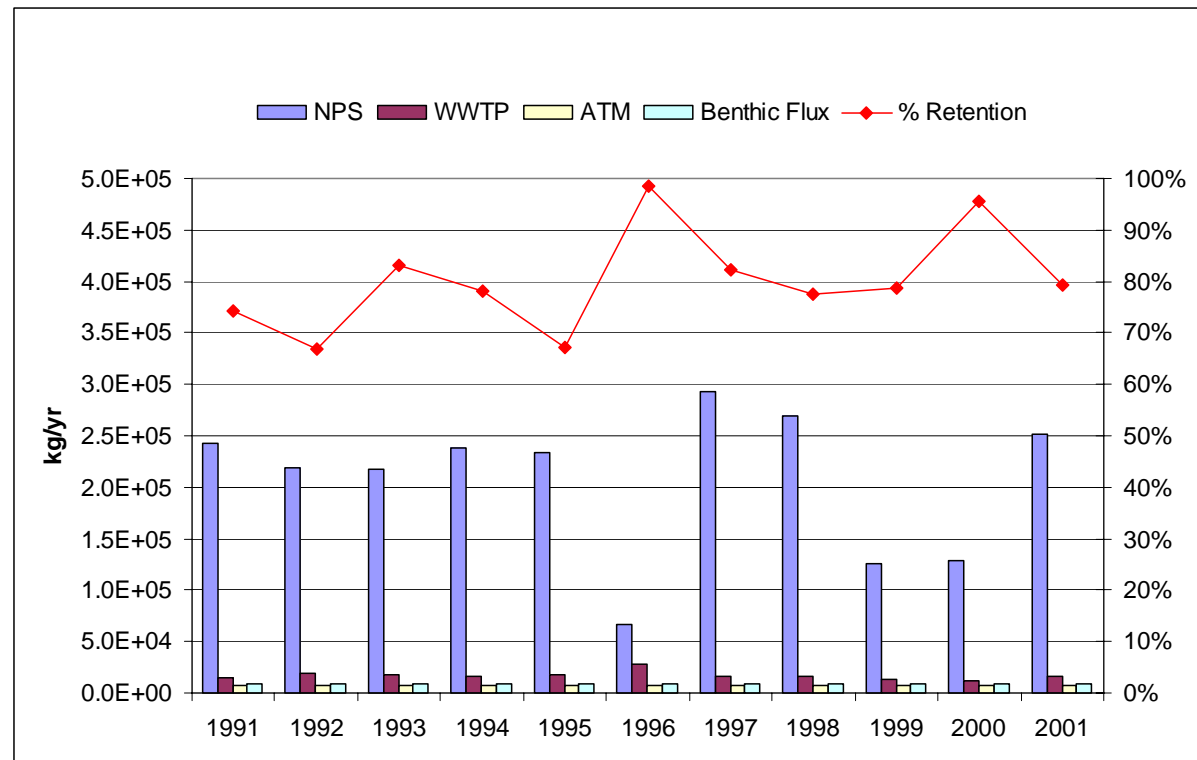


# North Central Texas



## Water Quality Project

### Cedar Creek WASP Model Nutrient Budget – TP (1991-2001)

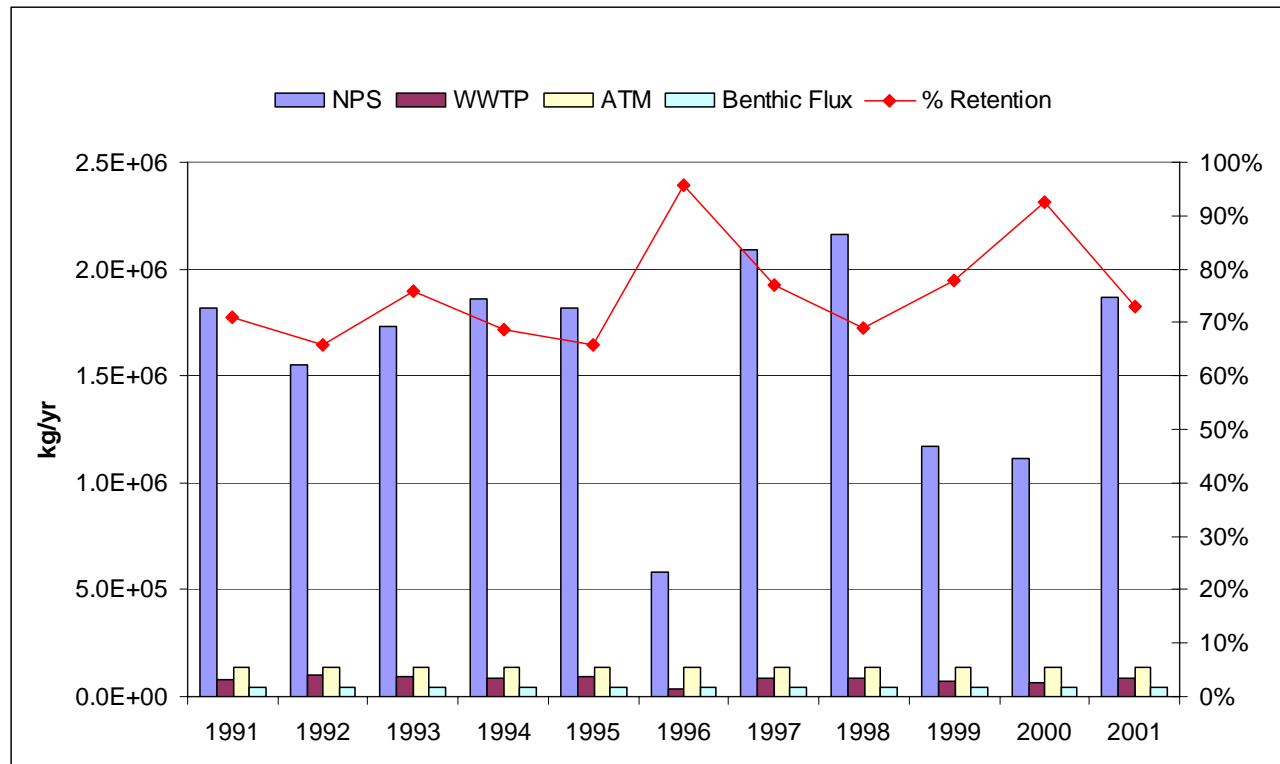


# North Central Texas

## Water Quality Project



### Cedar Creek WASP Model Nutrient Budget – TN (1991-2001)





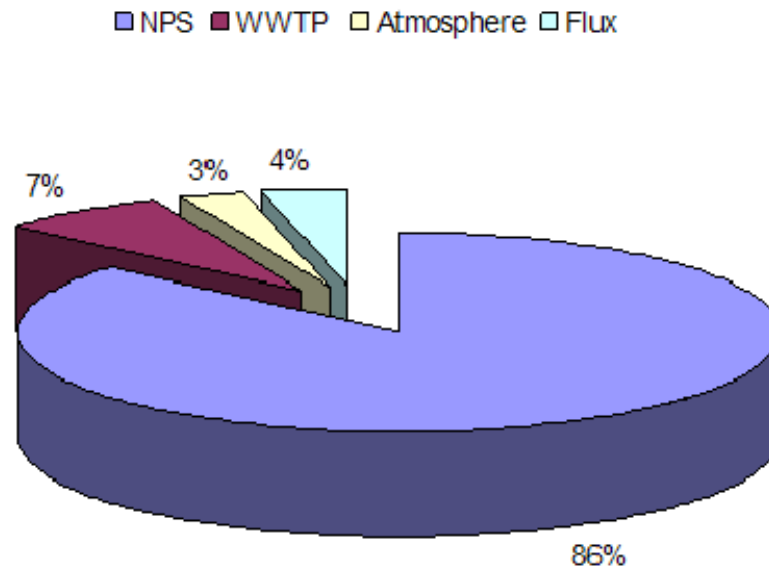
# North Central Texas



## Water Quality Project

---

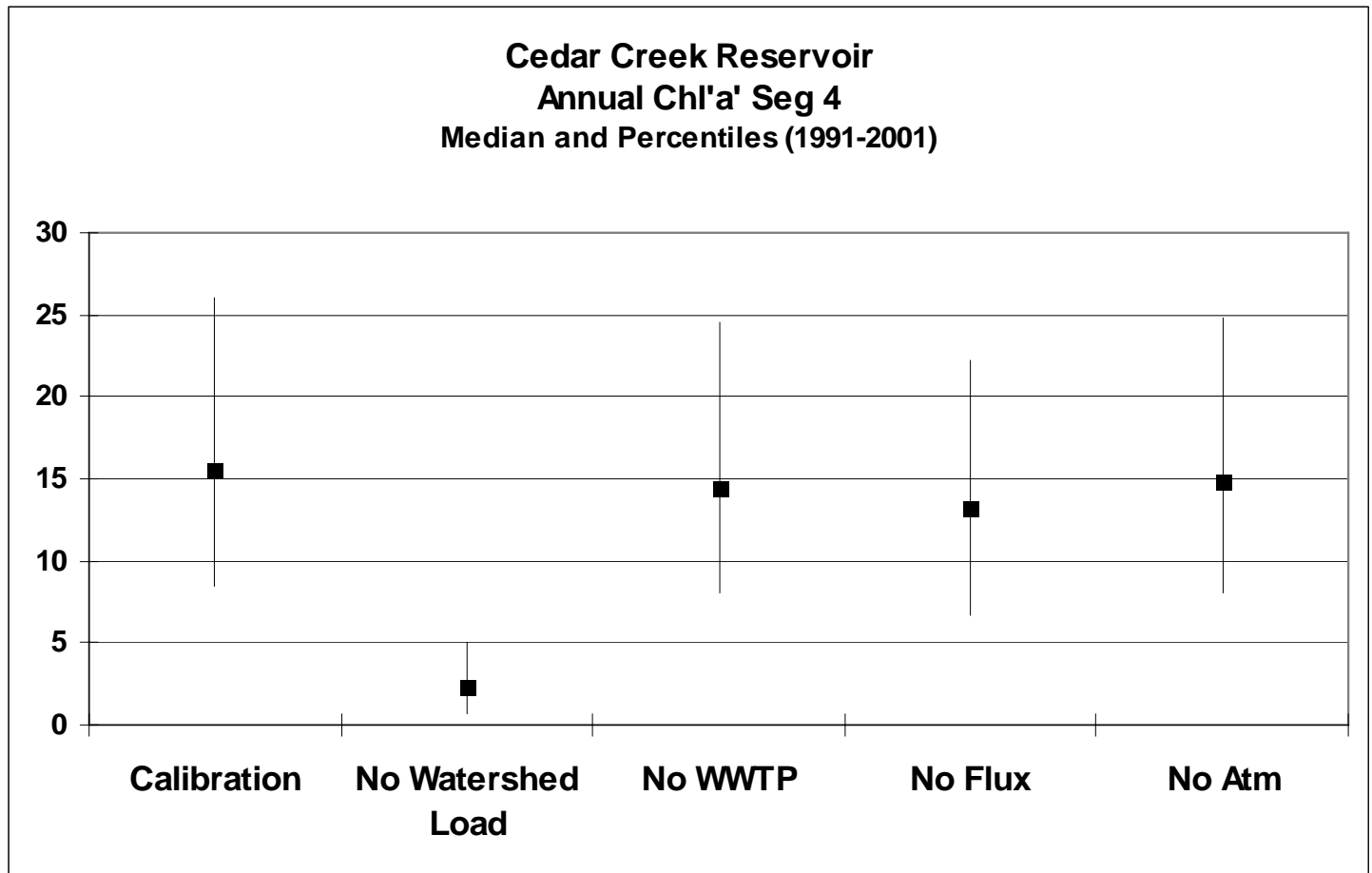
### Cedar Creek WASP Model Nutrient Budget – TP (1991-2001)



# North Central Texas



## Water Quality Project



# North Central Texas



## Water Quality Project

### Chl'a' Segment 4: Reduction in SWAT \*NPS File Loading – Median and Percentiles (91-01)

